

# School Year 2023-2024: Back to School Night @ LJMS

**LJ United (ESOL level 1 & 2)**  
ESOL Department



# Welcome to Luther Jackson!



# Our Team is LJ United



# Languages on our team

Spanish

Arabic

Bengali

Vietnamese

Chinese

# Classes all LJ United students must take

- English language
- Reading
- FOCUS Science
- Social Studies – History 7<sup>th</sup>
  - Civics 8<sup>th</sup>
- Physical Education
- Math
- Math Support or an elective

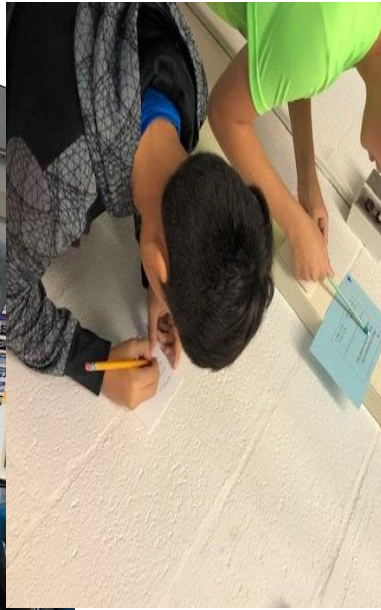
# Science

We do many experiments in science class to learn about our world!

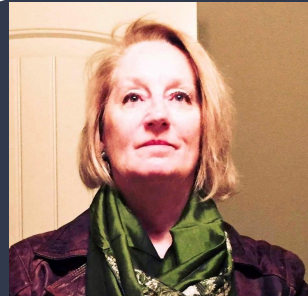


Ms. Roll

# Math Teachers



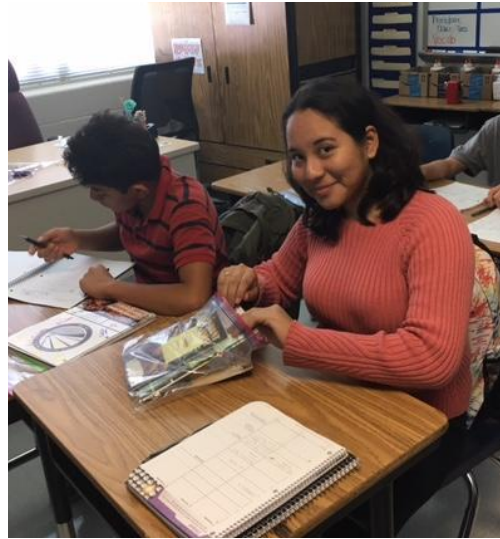
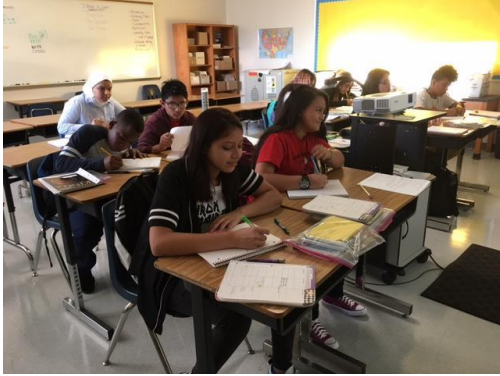
Ms. Lensink Mr. Behrens Ms. Rodgers



Ms. Deason

Ms. Bonner

# History and Civics Classes



Ms. Park



Ms. Smith

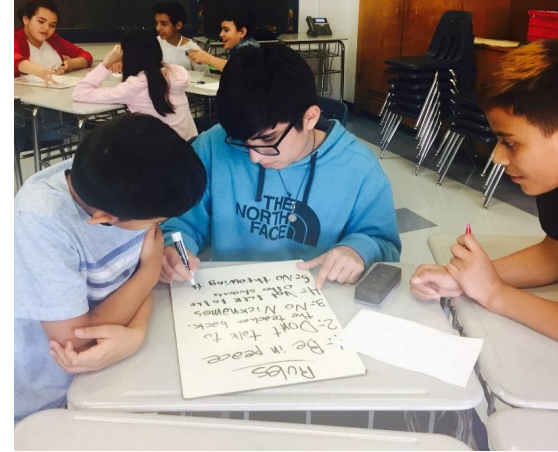
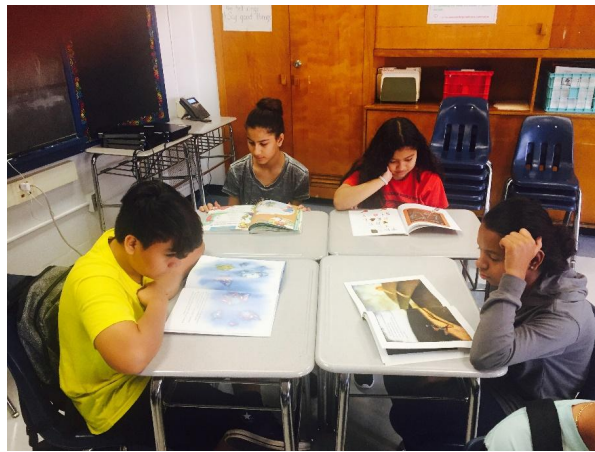


# English Language Classes



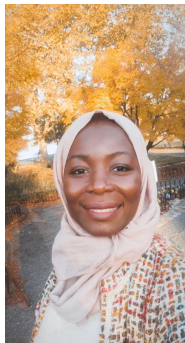
All LJ United students have English classes every day to help them learn English fast.

- Students need to
- 1) Practice.
  - 2) Be brave!
  - 3) Be here. 100%



# English and Reading Teachers

Ms. Lauderdale and Ms. Yedigarian  
Ms. Alhawsawi, Mr. Obeng, and Ms. Roll, Ms. Park



Read every night!

# PE/Physical Education/Gym/Health



**Ms. Uriona**  
**Ms. Johnson**  
**Mr. Wardlaw**  
**Mr. Bailey**  
**Mr. Wicks**

**Ms. Carroll (not  
pictured)**

# All classes use the Workshop model

## LJMS WORKSHOP MODEL ESSENTIAL COMPONENTS

open-ended tasks  
real/ authentic tasks  
multiple entry points  
differentiated

student-paced  
student-driven  
varied modalities

### INDEPENDENT STUDENT WORK IS DRIVEN BY:



#### PRODUCT CREATION

Students will produce something each time they engage with the content!  
(ex: discussion, tangible product, learning synthesis, reflection)



#### INSTRUCTIONAL TECH

Students will use engaging instructional technologies to interact with content!



#### LITERACY ENGAGEMENT

Students will read, write, listen, and/ or speak during every workshop.

### GUIDED STUDENT WORK OCCURS IN SMALL GROUP LEARNING:

Students will work in small groups or individually with teachers on skills determined by formative assessments.



#### WORKSHOPS WILL ALWAYS INCLUDE:

Community Builder  
Warm Up  
Explicit Skill teaching  
Built-in formative checks



# Our principal, Ms. Jones



# LJ United Administrators



**Ms. Toure**  
**Assistant Principal**



**Mr. Plunkett**  
**Assistant Principal**



**Ms. Moore**  
**Assistant Principal**



**Ms. Shuford**  
**Director of Student  
Services**

# LJ United Administrators



**Mr. Wisniewski**  
Dean of Students



**Ms. Kirk**  
Dean of Students



**Mr. Hoffert**  
After School  
Program Specialist



# Counselor: Mr. Tickle



- If you need help and don't know where to start, reach out to me.
- You can leave a message for me in a language other than English.
- My contact information:

[BRTickle@fcps.edu](mailto:BRTickle@fcps.edu)

703 204 8124



# Family Liaison –

Our Family Liaison speaks Spanish.  
They help parents communicate with  
the school.

Telephone number: 703-204-8134

Attendance line: 703-204-8282

# Our Social Worker

**Amanda Isaac** (*she, her, hers*)  
**Social Worker/Trabajadora social**

[ajisaac@fcps.edu](mailto:ajisaac@fcps.edu)

- Assesses and addresses social, emotional and behavioral factors that prevent student from academic success
- Provides crisis intervention
- Serves as liaison between home, school and community



# After school days by teacher

## **Mondays**

Ms. Alhawsawi

Ms. Rodgers

Ms. Smith

Mrs. Yedigarian

## **Wednesdays**

Mr. Behrens

Ms. Bonner

Ms. Lauderdale

## **Thursdays**

Ms. Lensink

Mr. Obeng

Ms. Roll

# Grades

Excellent = A = 90 – 100 %

Very good = B = 80 – 89 %

OK = C = 70 – 79%

Needs more work = D = 64 – 69 %

ACK!!! = F = 0 – 63 %



= A



= B



= C



= D



= F

Parent Vue/ Student Vue - You can get help



# Advisory period:

- This is your student's 4<sup>th</sup> period class
- Advisory is a small class held every day during period 4
- Students work on collaboration, communication, school success, and more
- Each week we have a lesson to help them become better students and global citizens

# Advisory

**Advisory is our time to come together as a team. We will build community and share important school information with students.** Advisory es nuestro momento de unirnos como equipo. Construiremos una comunidad y compartiremos información importante de la escuela con los estudiantes.



- **Social Emotional Learning (SEL) activities** will be present in the curriculum via the following activities:
  - Through check-in activities, recognizing and helping students manage emotions
  - Establishing and maintaining positive relationships
  - Helping students set positive goals
  - Helping students make responsible decisions
  - Providing empathy



talkingpoints

# Talking Points

- ❑ Talking Points is a FREE program so you can talk with us in your language through texts. You can install the app or we can send a regular SMS message.
- ❑ Talking Points es un programa GRATUITO para que puedas hablar con nosotros en tu idioma a través de mensajes de texto. Puede instalar la aplicación o podemos enviar un mensaje SMS regular.

# Parent Resources

**FCPS Resources for Families and Students**

**<https://www.fcps.edu/resources>**

**Virginia Department of Education Parent and Student Resources**

**<https://www.doe.virginia.gov/parents-students>**

**Colorin Colorado**

**<https://www.colorincolorado.org/>**

**Khan Academy Tutoring in English or Other Languages**

**<https://www.khanacademy.org/>**

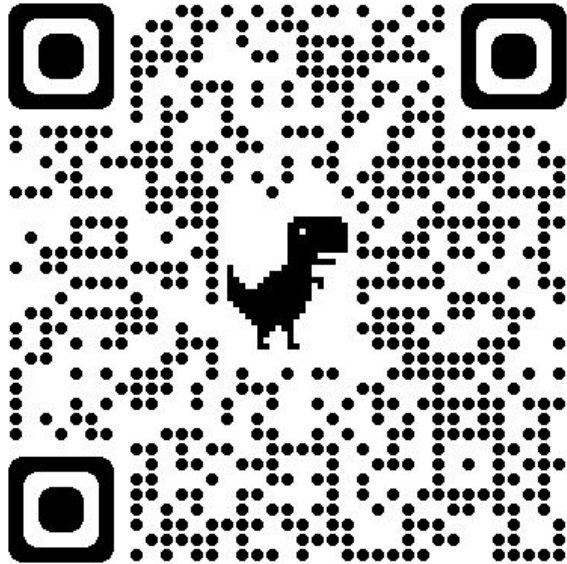




**At Jackson Middle, our teachers will use a variety of digital resources to support student learning and promote communication and collaboration with students and families.**

**Some digital resources — those that collect any student data or from vendors who have not established a formal contract with FCPS — cannot be used by students until we obtain consent from their guardian.**

**Please scan QR code below or go to website to sign the form!**



**<https://bit.ly/3PAXBMo>**



# Our after school website

## LJMS After-School 2023-2024 1st Quarter Schedule



2:35pm

3:40pm

Monday	Tuesday	Wednesday	Thursday	Friday
BATTLE OF THE BOOKS* BASKETBALL QUIET STUDY HALL LIBRARY STUDY HALL SCIENCE OLYMPIAD VOICES OF NOW* POKEMON CLUB VIDEO GAME CLUB DRAMA REHEARSALS SOCCER TENNIS ELL CONVERSATION CLUB	APPIAN BOARD GAMES AALEAD LIBRARY STUDY HALL QUIET STUDY HALL FUTSAL LEAGUE POKEMON CLUB VIDEO GAME CLUB YEARBOOK CHESS CLUB DRAMA REHEARSALS FITNESS BOOT CAMP ANIME CLUB	BASKETBALL MATH 7 CLUB MODEL UN QUIET STUDY HALL WEIGHT LIFTING ART STUDIO PODCASTING CLUB SOCCER VOICES OF NOW* POKEMON CLUB VIDEO GAME CLUB FOOD PANTRY FCCLA	FLAG FOOTBALL VOLLEYBALL ART STUDIO YEARBOOK QUIET STUDY HALL POKEMON CLUB VIDEO GAME CLUB ULTIMATE FRISBEE TSA ROBOTICS CLUB STUDENT COUNCIL ASSOC. ART STUDIO MATHCOUNTS REAL FOOD FOR KIDS	HW HELP BY APPT.  NO LATE BUSES AVAILABLE  PARENT PICK-UP AT 4:00PM
BASKETBALL QUIET STUDY HALL LIBRARY STUDY HALL POKEMON CLUB VIDEO GAME CLUB VOICES OF NOW* DRAMA REHEARSALS SOCCER OPEN GYM ELL CONVERSATION CLUB	QUIET STUDY HALL LIBRARY STUDY HALL BASKETBALL APPIAN BOARD GAMES OPEN GYM DRAMA REHEARSALS ANIME CLUB	BASKETBALL ART STUDIO LIBRARY STUDY HALL QUIET STUDY HALL VOICES OF NOW* GET2GREEN SOCCER	VOLLEYBALL ART STUDIO POKEMON CLUB VIDEO GAME CLUB LIBRARY STUDY HALL QUIET STUDY HALL RECYCLING CLUB ULTIMATE FRISBEE ART STUDIO WEIGHT LIFTING OPEN GYM	

\*CHECK THIS CLUB'S SCHOLOGY PAGE FOR SPECIFIC MEETING DATES (DOESN'T MEET WEEKLY)